



MONTHLY MEMBERSHIP PROGRESS REPORT

District 9 NC

Results as of: 06/30/2018

GMT: MICHAEL MOLENDIA

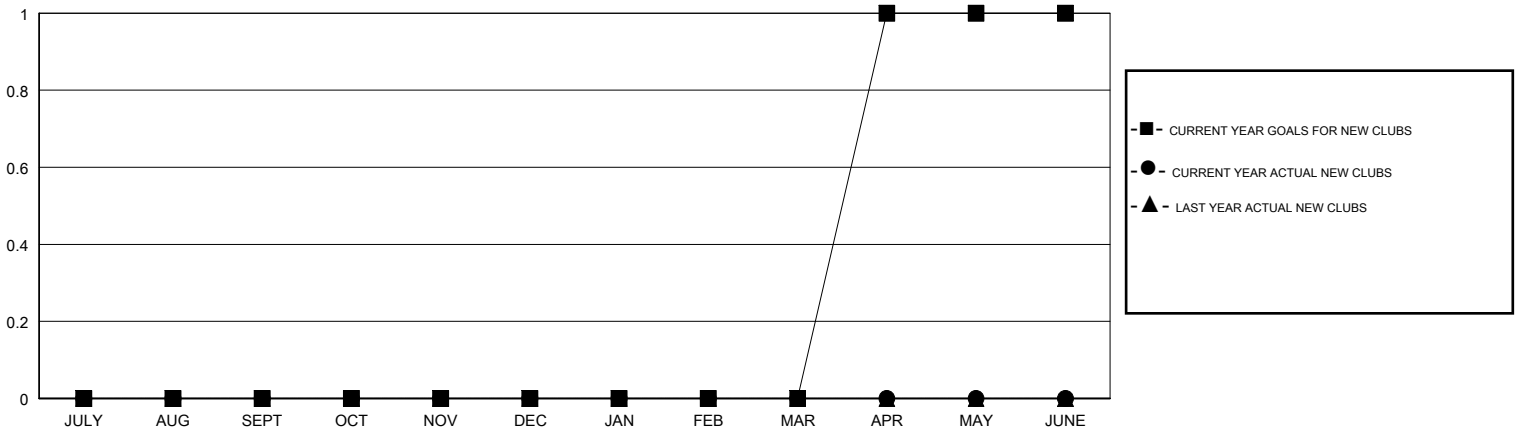
LOCATION IOWA

GMT CA

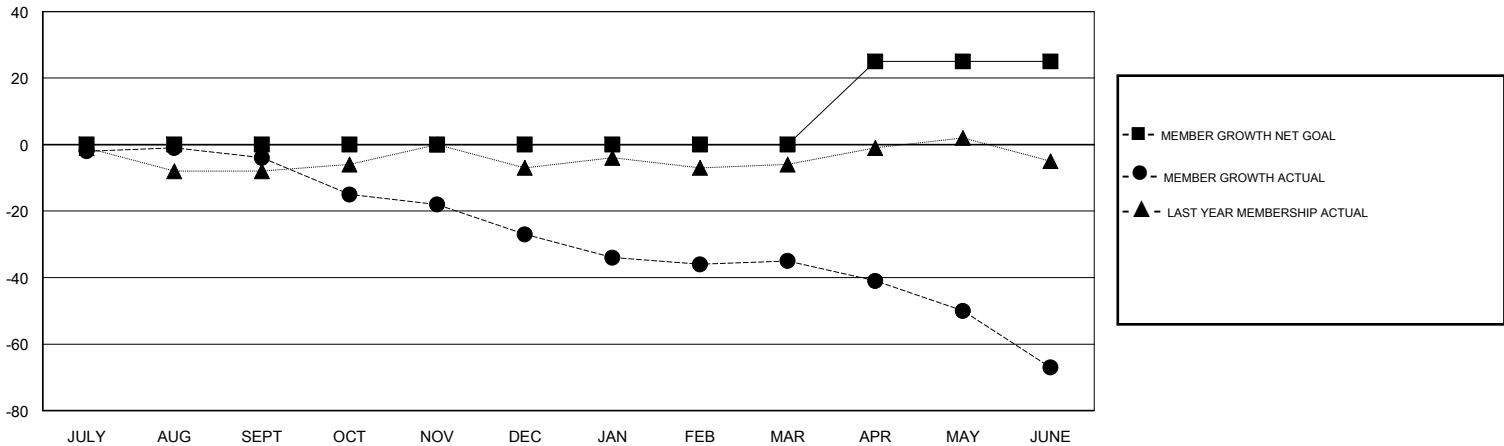
Clubs			
RESULTS FOR 2017-2018			
QUARTER	NEW CLUB GOAL	NEW CLUBS	DROPPED CLUBS
JULY/AUG/SEPT	0	0	0
OCT/NOV/DEC	0	0	1
JAN/FEB/MAR	0	0	0
APR/MAY/JUNE	1	0	0

Members			
RESULTS FOR 2017-2018			
QUARTER	MEMBER GROWTH NET GOAL	MEMBER GROWTH ACTUAL	DROPPED MEMBERS ACTUAL (including transfers)
JULY/AUG/SEPT	0	15	17
OCT/NOV/DEC	0	18	39
JAN/FEB/MAR	0	18	25
APR/MAY/JUNE	25	14	46

GOALS AND ACTUAL NEW CLUBS CUMULATIVE



GOALS AND ACTUAL MEMBERS CUMULATIVE



DROPPED CLUBS: 1	24 CLUBS OF 46 ADDED 1 OR MORE NEW MEMBERS	<u>GENDER DISTRIBUTION</u>	
DROPPED MEMBERS		MALE	883 (78.07%)
DECEASED	24	FEMALE	248 (21.93%)
CLUB CANCELLED	9	Women Percentage Fiscal Year Goal: 23%	
OTHER	94	TOTAL FAMILY UNIT MEMBERS	0
TOTAL	127	FAMILY MEMBERS PAYING HALF DUES	0

[CLICK HERE FOR CUMULATIVE MEMBERSHIP DATA](#)